

# INFLATION RATE, CONSUMER PRICE INDEX, AND PURCHASING POWER OF PESO

**FEBRUARY 2025**

INFLATION RATES IN DAVAO ORIENTAL  
ALL ITEMS: (2018 = 100)

## INFLATION RATES FOR FEBRUARY 2024, JANUARY 2025, AND FEBRUARY 2025

**FEBRUARY 2024**

**6.9**

**JANUARY 2025**

**0.8**

**FEBRUARY 2025**

**-1.7**

### INFLATION RATE BY MAJOR COMMODITY GROUP

	<b>Food and Non-Alcoholic Beverages</b>	• February 2025 -3.4	• January 2025 1.4
	<b>Alcoholic Beverages and Tobacco</b>	• February 2025 1.3	• January 2025 1.3
	<b>Clothing and Footwear</b>	• February 2025 2.9	• January 2025 3.8
	<b>Housing, Water, Electricity, Gas, and Other Fuels</b>	• February 2025 -0.2	• January 2025 -1.3
	<b>Furnishings, Household Equipment and Routine Household Maintenance</b>	• February 2025 2.3	• January 2025 2.4
	<b>Health</b>	• February 2025 0.5	• January 2025 0.4

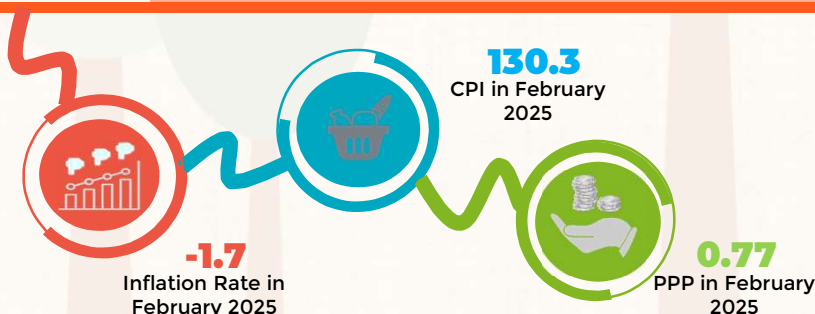
	<b>Transport</b>	• February 2025 -4.2	• January 2025 -3.3
	<b>Information and Communication</b>	• February 2025 0.8	• January 2025 0.8
	<b>Recreation, Sport and Culture</b>	• February 2025 2.6	• January 2025 4.1
	<b>Education Services</b>	• February 2025 2.4	• January 2025 2.4
	<b>Restaurants and Accommodation Services</b>	• February 2025 1.1	• January 2025 0.6
	<b>Financial Services</b>	• February 2025 0.0	• January 2025 0.0
	<b>Personal Care, and Miscellaneous Goods and Services</b>	• February 2025 2.8	• January 2025 2.9

### TECHNICAL NOTES

**INFLATION RATE** is the annual rate of change or the year-on-year change in the CPI expressed in percent. Inflation is interpreted in terms of declining purchasing power of the peso.

**CONSUMER PRICE INDEX (CPI)** is an indicator of the change in the average retail prices of a fixed basket of goods and services commonly purchased by households relative to a base year.

**PURCHASING POWER OF PESO (PPP)** shows how much the peso in the base year (2018) is worth in another period.



Disclaimer: Graphics used are properties of their respective owner. No copyright infringement intended.



REPUBLIC OF THE PHILIPPINES  
**PHILIPPINE STATISTICS AUTHORITY**  
DAVAO ORIENTAL



Miel Bldg., Rizal Extension, Central  
City of Mati, Davao Oriental 8200  
(087) 306-1824  
davaooriental@psa.gov.ph