



# DAVAO REGION INFLATION RATE FOR THE BOTTOM 30% INCOME HOUSEHOLDS JUNE 2025 (2018=100)



DATE PUBLISHED: 11 JULY 2025

REFERENCE NO.: INF-25RSSO11-088

## INFLATION FOR THE BOTTOM 30% INCOME HOUSEHOLD

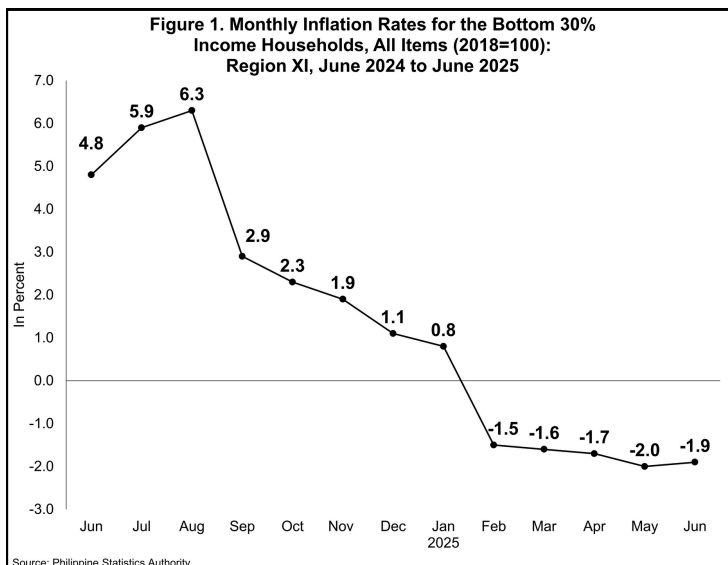
# -1.9%

The regional inflation for the bottom 30% income household increased to -1.9 percent in June 2025, from -2.0 percent in May 2025.



## 126.5 CPI

In June 2025, the CPI for the bottom 30% income household posted at 126.5.



DID YOU KNOW?

### How does the PSA compile the CPI for the bottom 30% income households?

The CPI for the bottom 30% income households is compiled by the PSA to measure the changes of prices of commodities commonly purchased by the families that belong to the bottom 30% income decile.

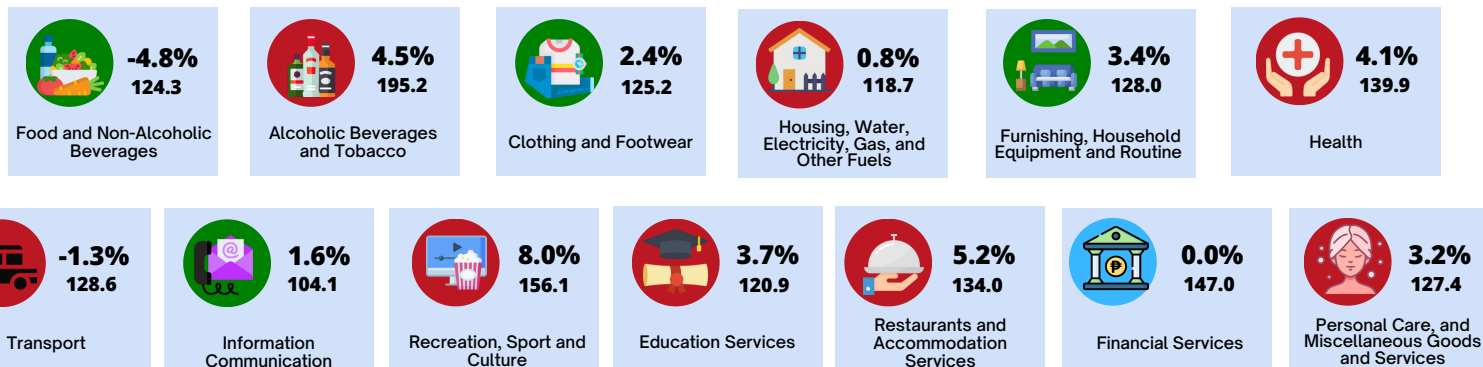
### INFLATION RATE

is the annual rate of change or the year-on-year change in the **CONSUMER PRICE INDEX (CPI)** expressed in percent.

### CPI

is an indicator of the change in the average retail prices of a fixed basket of goods and services commonly purchased by households relative to a base year.

## INFLATION RATE (%) AND CPI BY COMMODITY GROUP, DAVAO REGION



INCREASE



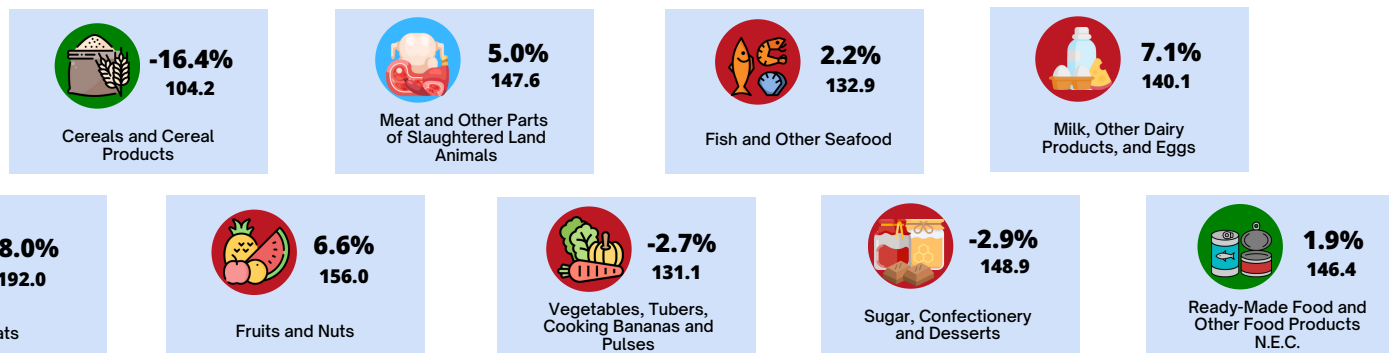
DECREASE



NO CHANGE

\*AS COMPARED TO MAY 2025 INFLATION

## INFLATION RATE (%) AND CPI BY SELECTED FOOD GROUP, DAVAO REGION



SOURCE: SURVEY OF RETAIL PRICES OF COMMODITIES FOR CONSUMER PRICE INDEX, PHILIPPINE STATISTICS AUTHORITY  
ICONS: FLATICON.COM

APPROVED FOR RELEASE:

*Tracy*  
**RANDOLPH ANTHONY B. GALES**  
(Chief Statistical Specialist)  
Officer-In-Charge  
Regional Statistical Services Office 11  
MLCM/KTA



REPUBLIC OF THE PHILIPPINES  
**PHILIPPINE STATISTICS AUTHORITY**  
REGIONAL STATISTICAL SERVICES OFFICE - DAVAO REGION

Ango Building, Cabaguio Avenue, Davao City



(082) 224-1140  
/PSAgovphx  
<http://rsso11.psa.gov.ph>  
[rsso11@psa.gov.ph](mailto:rsso11@psa.gov.ph)  
[rsso11sodc@psa.gov.ph](mailto:rsso11sodc@psa.gov.ph)





# DAVAO REGION INFLATION RATE FOR THE BOTTOM 30% INCOME HOUSEHOLDS JUNE 2025 (2018=100)



DATE PUBLISHED: 11 JULY 2025

REFERENCE NO.: INF-25RSSO11-089

## INFLATION FOR THE BOTTOM 30% INCOME HOUSEHOLD

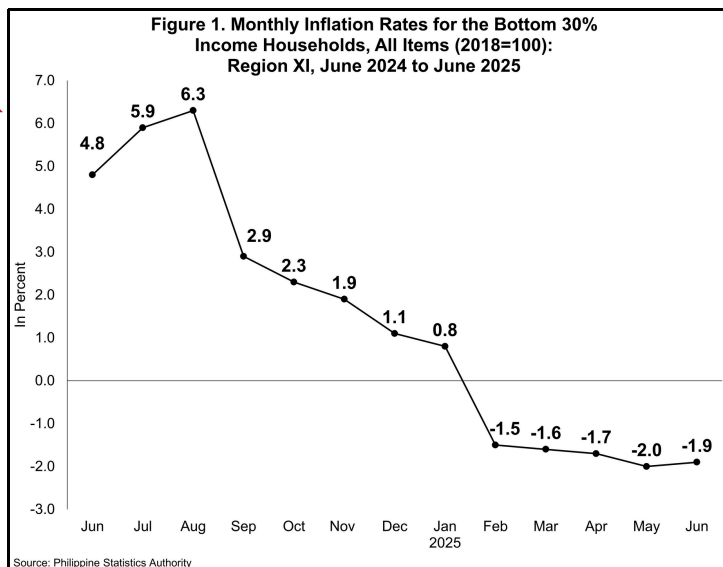
# -1.9%

Ang inflation para sa bottom 30% income household ng rehiyon ay tumaas ng -1.9 porsiyento noong Hunyo 2025, mula -2.0 porsiyento noong Mayo 2025.



## 126.5 CPI

Noong Hunyo 2025, ang CPI para sa bottom 30% income household ng rehiyon ay naitala sa 126.5.



**Paano tinitipon ng PSA ang CPI para sa mga sambahayan na may pinakamababang 30% na kita?**

Ang CPI para sa pinakamababang 30% na kita na mga sambahayan ay pinagsama-sama ng PSA upang sukatin ang mga pagbabago sa mga presyo ng mga bilihin na karaniwang binibili ng mga pamilyang kabilang sa ilalim ng 30% na decile ng kita.

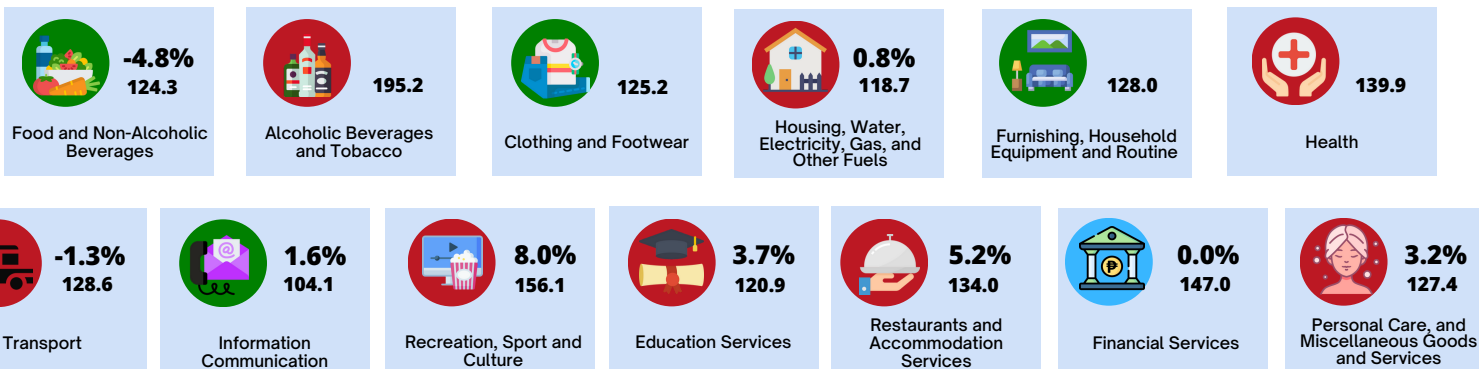
### INFLATION RATE

ay ang taunang rate ng pagbabago o ang taunang pagbabago sa **CONSUMER PRICE INDEX (CPI)**.

### CPI

ay tanda ng pagbabago ng kabuuang presyo ng isang basket ng mga produkto at serbisyo na karaniwang binibili ng isang sambahayan (household) sa isang taon kumpara sa presyo nito sa itinakdang taon (base year).

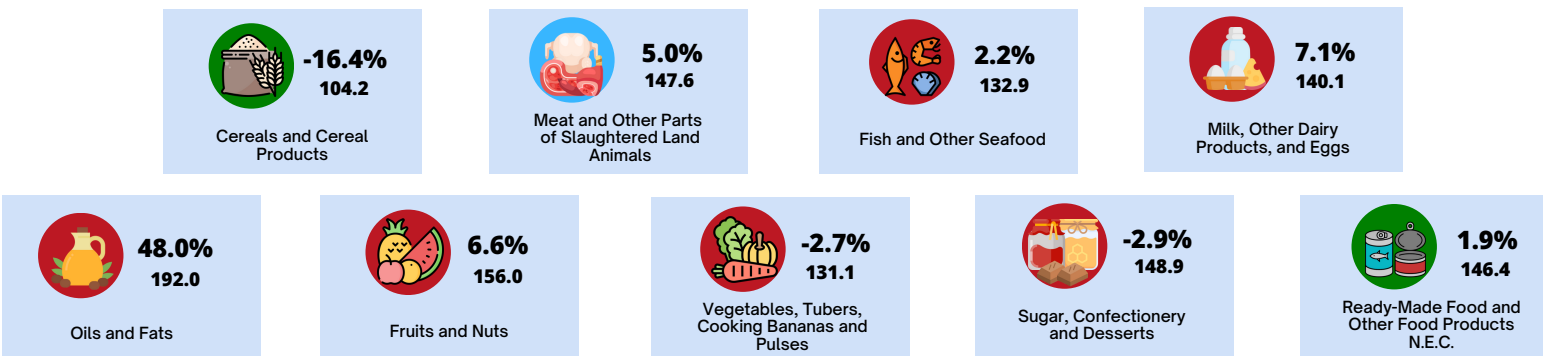
## INFLATION RATE (%) AND CPI BY COMMODITY GROUP, DAVAO REGION



● INCREASE ● DECREASE ● NO CHANGE

\*KUMPARA SA INFLATION NOONG MAYO 2025 INFLATION

## INFLATION RATE (%) AND CPI BY SELECTED FOOD GROUP, DAVAO REGION



SOURCE: SURVEY OF RETAIL PRICES OF COMMODITIES FOR CONSUMER PRICE INDEX, PHILIPPINE STATISTICS AUTHORITY  
ICONS: FLATICON.COM

APPROVED FOR RELEASE:

**RANDOLPH ANTHONY B. GALES**  
(Chief Statistical Specialist)  
Officer-In-Charge  
Regional Statistical Services Office 11  
MLCM/KIA



REPUBLIC OF THE PHILIPPINES  
**PHILIPPINE STATISTICS AUTHORITY**  
REGIONAL STATISTICAL SERVICES OFFICE - DAVAO REGION

Ango Building, Cabaguio Avenue, Davao City



(082) 224-1140  
/PSAgovphxi  
<http://rsso11.psa.gov.ph>  
[rsso11@psa.gov.ph](mailto:rsso11@psa.gov.ph)  
[rsso11sodc@psa.gov.ph](mailto:rsso11sodc@psa.gov.ph)

