



DAVAO REGION INFLATION RATE FOR THE BOTTOM 30% INCOME HOUSEHOLDS SEPTEMBER 2024 (2018=100)



DATE PUBLISHED: 25 OCTOBER 2024

REFERENCE NO.: INF-24RSSO11-063

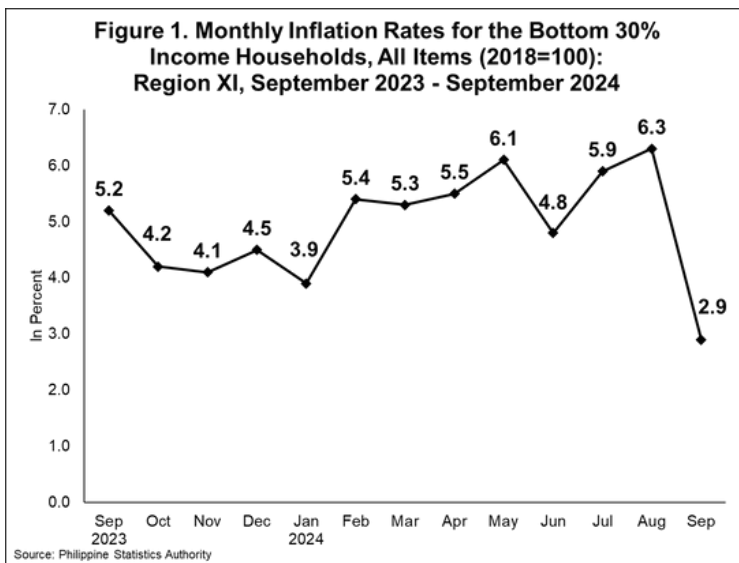
INFLATION FOR THE BOTTOM 30% INCOME HOUSEHOLD

2.9%

The regional inflation for the bottom 30% income household decreased to 2.9 percent in September 2024, from 6.3 percent in August 2024.

129.5 CPI

In September 2024, the CPI for the bottom 30% income household posted at 129.5.



DID YOU KNOW?

How does the PSA compile the CPI for the bottom 30% income households?

The CPI for the bottom 30% income households is compiled by the PSA to measure the changes of prices of commodities commonly purchased by the families that belong to the bottom 30% income decile.

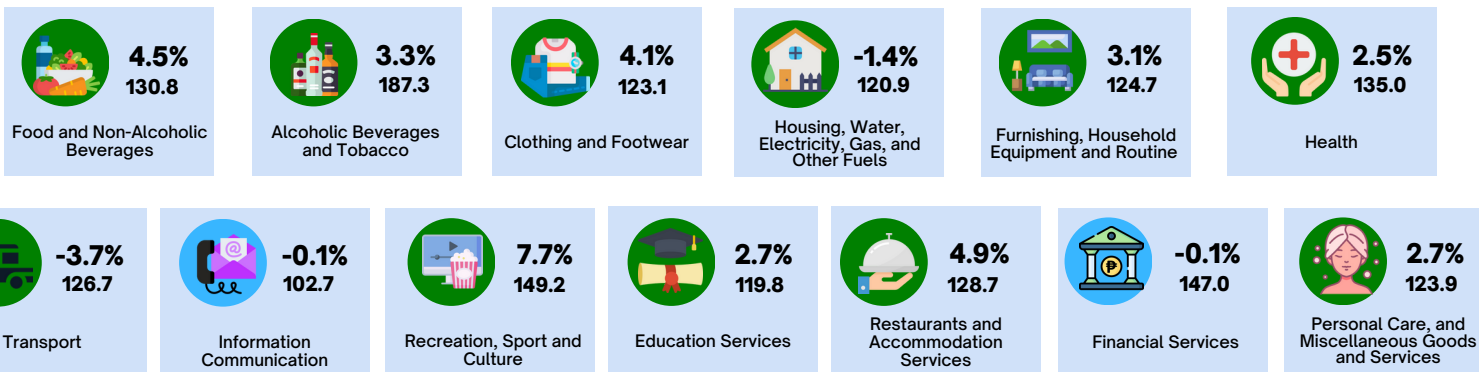
INFLATION RATE

is the annual rate of change or the year-on-year change in the **CONSUMER PRICE INDEX (CPI)** expressed in percent.

CPI

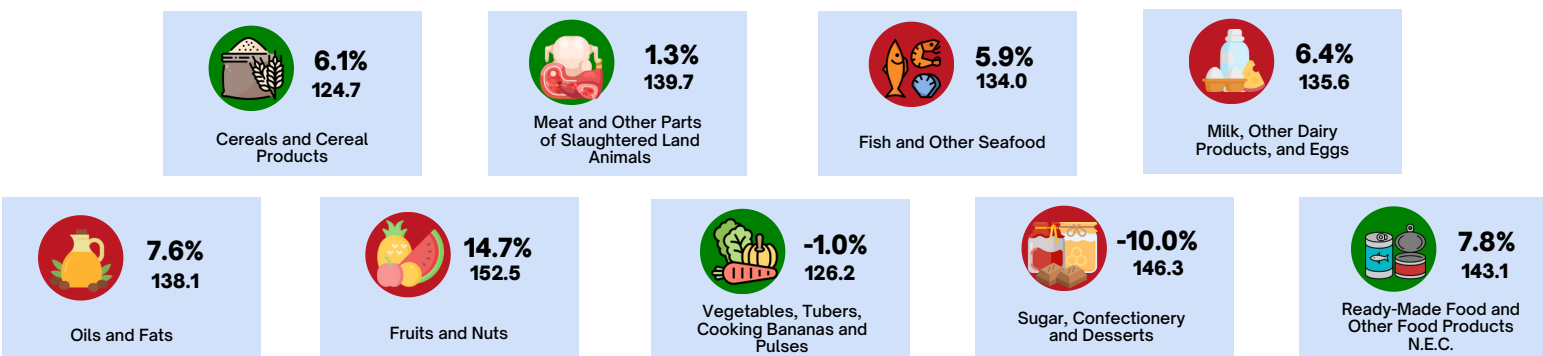
is an indicator of the change in the average retail prices of a fixed basket of goods and services commonly purchased by households relative to a base year.

INFLATION RATE (%) AND CPI BY COMMODITY GROUP, DAVAO REGION



AS COMPARED TO AUGUST 2024 INFLATION

INFLATION RATE (%) AND CPI BY SELECTED FOOD GROUP, DAVAO REGION



SOURCE: SURVEY OF RETAIL PRICES OF COMMODITIES FOR CONSUMER PRICE INDEX, PHILIPPINE STATISTICS AUTHORITY
ICONS: FLATICON.COM

APPROVED FOR RELEASE:

RANDOLPH ANTHONY B. GALES
(Chief Statistical Specialist)
Officer-In-Charge
Regional Statistical Services Office 11

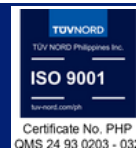


REPUBLIC OF THE PHILIPPINES
PHILIPPINE STATISTICS AUTHORITY
REGIONAL STATISTICAL SERVICES OFFICE - DAVAO REGION

Ango Building, Cabaguio Avenue, Davao City



(082) 224-1140
/PSA1govph
<http://rso11.psa.gov.ph>
rso11@psa.gov.ph
rso11socd@psa.gov.ph



Certificate No. PHP
QMS 24 93 0203 - 032



DAVAO REGION INFLATION RATE FOR THE BOTTOM 30% INCOME HOUSEHOLDS SEPTEMBER 2024 (2018=100)



DATE PUBLISHED: 25 OCTOBER 2024

REFERENCE NO.: INF-24RSSO11-064

DID YOU KNOW?

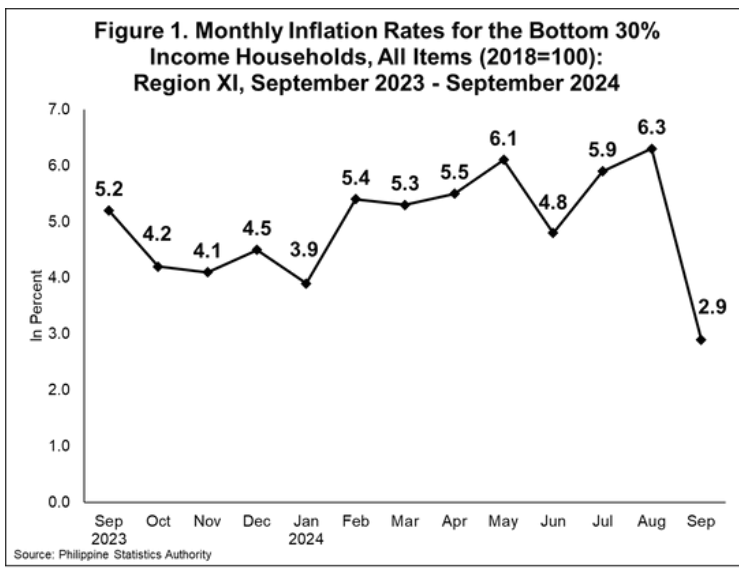
INFLATION FOR THE BOTTOM 30% INCOME HOUSEHOLD

2.9%

Ang inflation para sa bottom 30% income household ng rehiyon ay bumaba ng 2.9 porsiyento noong Setyembre 2024, mula 6.3 porsiyento noong Agosto 2024.

129.5 CPI

Noong Setyembre 2024, ang CPI para sa bottom 30% income household ng rehiyon ay naitala sa 129.5.



Paano tinitipon ng PSA ang CPI para sa mga sambahayan na may pinakamababang 30% na kita?
 Ang CPI para sa pinakamababang 30% na kita na mga sambahayan ay pinagsama-sama ng PSA upang sukatin ang mga pagbabago sa mga presyo ng mga bilingin na karaniwang binibili ng mga pamilyang kabilang sa ilalim ng 30% na decile ng kita.

INFLATION RATE
 ay ang taunang rate ng pagbabago o ang taunang pagbabago sa **CONSUMER PRICE INDEX (CPI)**.

CPI
 ay tanda ng pagbabago ng kabuuang presyo ng isang basket ng mga produkto at serbisyo na karaniwang binibili ng isang sambahayan (household) sa isang taon kumpara sa presyo nito sa itinakdang taon (base year).

INFLATION RATE (%) AND CPI BY COMMODITY GROUP, DAVAO REGION

4.5% 130.8	3.3% 187.3	4.1% 123.1	-1.4% 120.9	3.1% 124.7	2.5% 135.0
-3.7% 126.7	-0.1% 102.7	7.7% 149.2	2.7% 119.8	4.9% 128.7	-0.1% 147.0
2.7% 123.9	<p>● TUMAAS ● BUMABA ● WALANG PAGBABAGO</p>				

*KUMPARA SA INFLATION NOONG AGOSTO 2024 INFLATION

INFLATION RATE (%) AND CPI BY SELECTED FOOD GROUP, DAVAO REGION

6.1% 124.7	1.3% 139.7	5.9% 134.0	6.4% 135.6
7.6% 138.1	14.7% 152.5	-1.0% 126.2	-10.0% 146.3
7.8% 143.1			

SOURCE: SURVEY OF RETAIL PRICES OF COMMODITIES FOR CONSUMER PRICE INDEX, PHILIPPINE STATISTICS AUTHORITY
ICONS: FLATICON.COM

APPROVED FOR RELEASE:

RANDOLPH ANTHONY B. GALES
 (Chief Statistical Specialist)
 Officer-In-Charge
 Regional Statistical Services Office 11