



REPUBLIC OF THE PHILIPPINES

PHILIPPINE STATISTICAL AUTHORITY

DAVAO DEL NORTE PROVINCIAL STATISTICAL OFFICE

SPECIAL RELEASE

Household Population, Number of Households, and Average Household Size in Davao del Norte (2020 Census of Population and Housing)

Date of Release : 06 May 2022
Reference No. : SRDDN2022-008

Total population in Davao del Norte comprises 21.5 percent of the total population of Davao Region

1. As of 01 May 2020, Region XI has a total population of 5,243,536 persons with a percentage share of 21.5 percent or a total count of 1,125,057 persons from Davao del Norte. The household population and household size of the province reached a total of 1,115,167 and 271,655, respectively. (Table A.)
2. Included in the total population of Davao del Norte is the institutional population with a total count of 9,890 persons. These are the persons residing in collective or institutional living quarters such as hospitals, orphanages, military camps, Filipinos in Philippine embassies, consulates, and missions abroad.

Table A. Total Population, Household Population, Number of Households, and Average Household Size of the Philippines, Region XI and Province

Philippines / Region / Province	Total Population	Household Population	Number of Households	Average Household Size
Philippines	109,035,343	108,667,043	26,393,906	4.1
Region XI (Davao Region)	5,243,536	5,223,802	1,337,781	3.9
Davao de Oro (Compostela Valley)	767,547	766,299	188,918	4.1
Davao del Norte	1,125,057	1,115,167	271,655	4.1
Davao del Sur	680,481	679,457	182,681	3.7
City of Davao	1,776,949	1,770,988	476,278	3.7
Davao Occidental	317,159	316,907	78,185	4.1
Davao Oriental	576,343	574,984	140,064	4.1

Source: Philippine Statistics Authority, 2020 Census of Population and Housing



/F Ango Realty Corp. Bldg., 1085 Osmeña Street, City of Tagum, Davao del Norte 8100
Telefax No.: (084) 655-9605
Cellphone No.: PSA Matters: 09381536123 || PhilSys Matters: 09317265078
e-mail: PSA Matters: psadvon@gmail.com
addresses: PhilSys Matters: philsys.psa23@gmail.com

Household population in Davao del Norte increased by 10.75 percent from its total population in 2015

Total household population of Davao del Norte increased by 10.75 percent to a total of 108,279 persons from 2015 mid-decade census. Conversely, with an increase of 38,423 households from the 233,232 households in 2015, and 60,556 households from census year of 2010. (Figure 1 and Table B.)

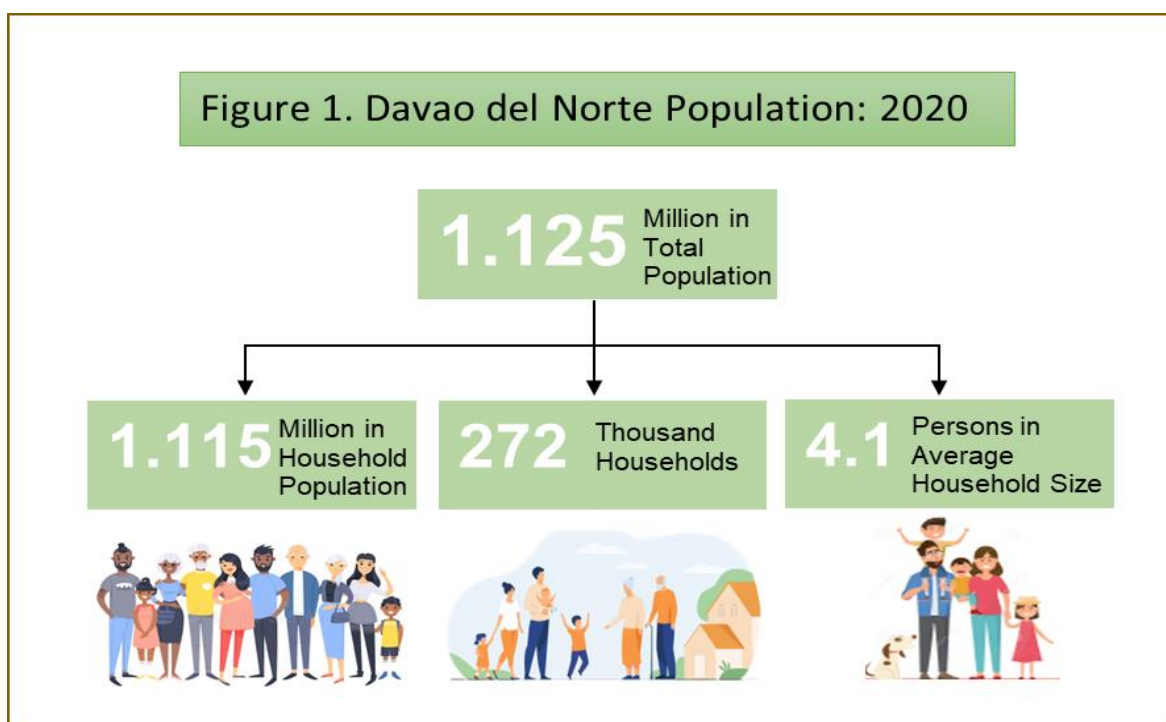


Table B. Household Population, Number of Households, and Average Household Size of Davao del Norte, By Census Year

Census Year	Household Population	Number of Households	Average Household Size
2010	937,785	211,099	4.4
2015	1,006,888	233,232	4.3
2020	1,115,167	271,655	4.1

Source: Philippine Statistics Authority, 2020 Census of Population and Housing

Three in every five households in Davao del Norte are in the City of Tagum, City of Panabo, Island Garden City of Samal, and Santo Tomas

Among the eight (8) municipalities and three (3) component cities of Davao del Norte, the City of Tagum has the greatest number of 71,377 households in 2020. It is followed by the City of Panabo (51,097 households), municipality of Santo Tomas (30,750), and the Island Garden City of Samal (IGaCoS), with 29,973 households.

While the very least number of households is counted in municipality of Talaingod to a total of 6,422. (Table C.).

Table C. Davao del Norte Household Population, Number of Households, and Average Household Size by City/Municipality, 2022

Region / Province / City / Municipality	Total Population	Household Population	Number of Households	Average Household Size
Davao del Norte	1,125,057	1,115,167	271,655	4.1
Asuncion (Saug)	61,893	61,867	15,416	4.0
Carmen	82,018	82,016	19,872	4.1
Kapalong	81,068	81,023	19,041	4.3
New Corella	57,913	57,733	13,958	4.1
City of Panabo	209,230	208,464	51,097	4.1
Island Garden City of Samal (IGaCoS)	116,771	116,638	29,973	3.9
Santo Tomas	128,667	127,890	30,750	4.2
City of Tagum (Capital)	296,202	294,795	71,377	4.1
Talaingod	28,333	28,327	6,422	4.4
Braulio E. Dujali	35,729	29,218	7,178	4.1
San Isidro	27,233	27,196	6,571	4.1

Source: Philippine Statistics Authority, 2020 Census of Population and Housing

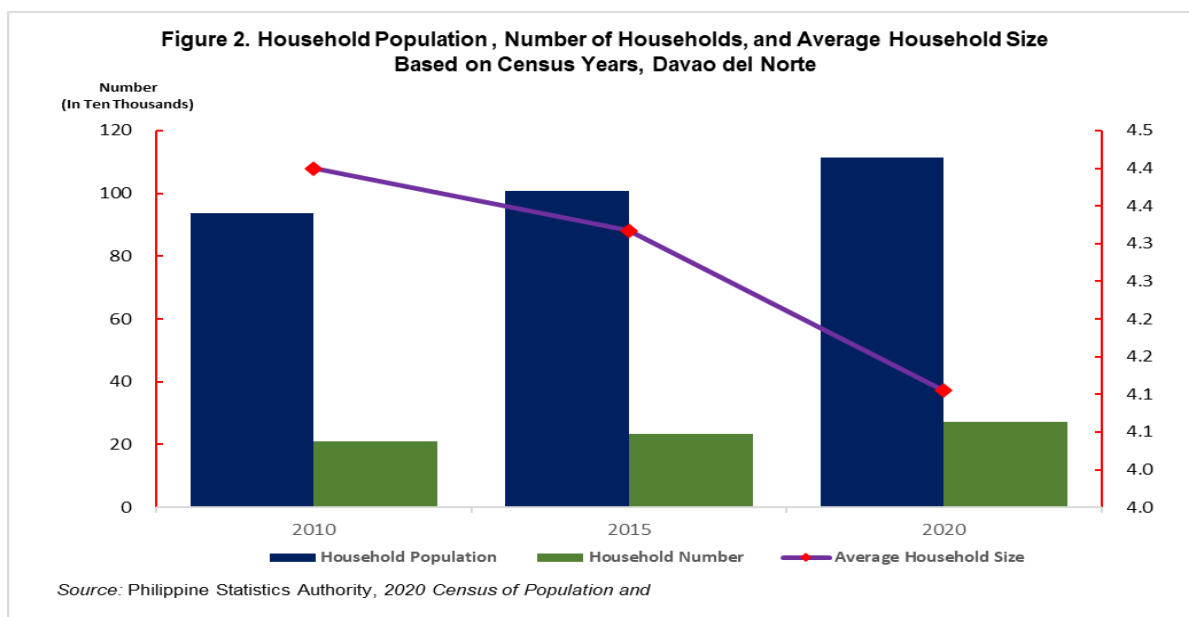
Average household size in the province declines to 4.1 persons in 2020

Average household size in the province declined to 4.1 persons compared to the average household size of 4.3 in 2015, and of 4.4 in 2010. The decrease in the average size of household could be attributed to the increasing number of households as of 01 May 2022. (Figure 2).

Table C showed that among local government units (LGU), the Indigenous People's municipality of Talaingod has the highest average household size of 4.4, followed by Kapalong (4.3), and Santo Tomas (4.2).



On the other hand, the Island Garden City of Samal has the very least household size on the average of 3.9.



TECHNICAL NOTES

- The 2020 CPH was undertaken by the Philippine Statistics Authority in September 2020 pursuant to Republic Act No. 10625, also known as the Philippine Statistical Act of 2013, and Batas Pambansa (B.P.) Bilang (Blg.) 72, which further accorded the PSA the authority to conduct population censuses every ten (10) years beginning in 1980. The 2020 CPH is the country's 15th Census of Population and 7th Census of Housing since 1903.
- Information on the count of population were collected on its census reference time and date at 12:01 A.M. of May 1, 2020.
- His Excellency President Rodrigo R. Duterte declared as official for all purposes the population counts by province, city/municipality, and barangay, based on the 2020 CPH under Proclamation No. 1179, dated 06 July 2021. The population counts were based on census questionnaires accomplished by about 90,000 enumerators deployed during the nationwide census taking.
- The successful completion of the census-taking was made possible with the support of the local and national officials, government agencies, local government units, media, private agencies, and non-government organizations.

DEFINITION OF CENSUS TERMS AND CONCEPTS

Household

A social unit consisting of a person living alone or a group of persons who sleep in the same housing unit and have a common arrangement in the preparation and consumption of food.

Household Population

Comprises of persons who belong to a household

Household Members

In determining household membership, the basic criterion is the usual place of residence or the place where the person usually resides. This may be same or different from the place where he/she is found at the time of the census.

Institutional Living Quarter

Institutional living quarter (ILQ) is a structurally separate and independent place of abode intended for habitation by large groups of individuals. Such a quarter usually has certain common facilities such as kitchen and dining room, toilet and bath, and lounging area which are shared by the occupants.

Institutional Population

Comprises of persons who are found living in institutional living quarters. They may have their own families or households elsewhere but at the time of the census, they are committed or confined in institutions, or they live in institutional living quarters and are usually subject to a common authority or management, or are bound by either a common public objective or a common personal interest.

PEPITO D. AMOYEN
Chief Statistical Specialist

