



DAVAO REGION INFLATION RATE FOR THE BOTTOM 30% INCOME HOUSEHOLDS FEBRUARY 2025 (2018=100)



DATE PUBLISHED: 07 MARCH 2025

REFERENCE NO.: INF-25RSSO11-021

INFLATION FOR THE BOTTOM 30% INCOME HOUSEHOLD

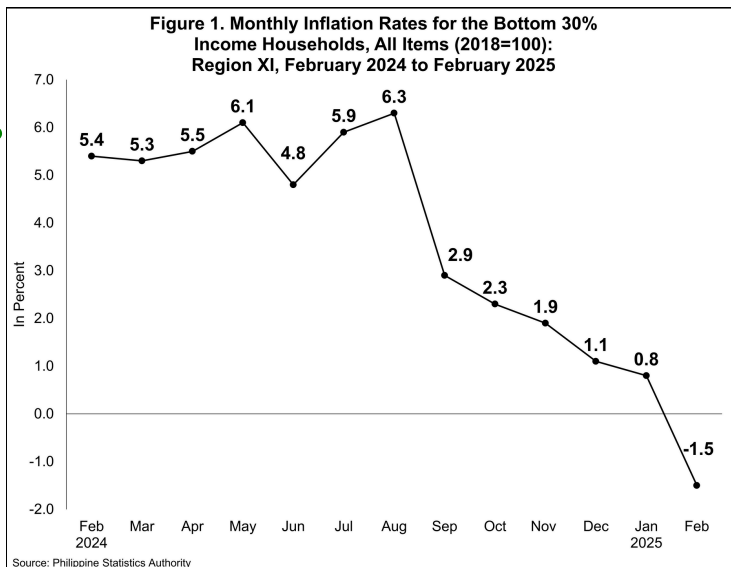
-1.5%

The regional inflation for the bottom 30% income household declined to -1.5 percent in February 2025, from 0.8 percent in January 2025.



128.2 CPI

In February 2025, the CPI for the bottom 30% income household posted at 128.2.



DID YOU
KNOW?

How does the PSA compile the CPI for the bottom 30% income households?

The CPI for the bottom 30% income households is compiled by the PSA to measure the changes of prices of commodities commonly purchased by the families that belong to the bottom 30% income decile.

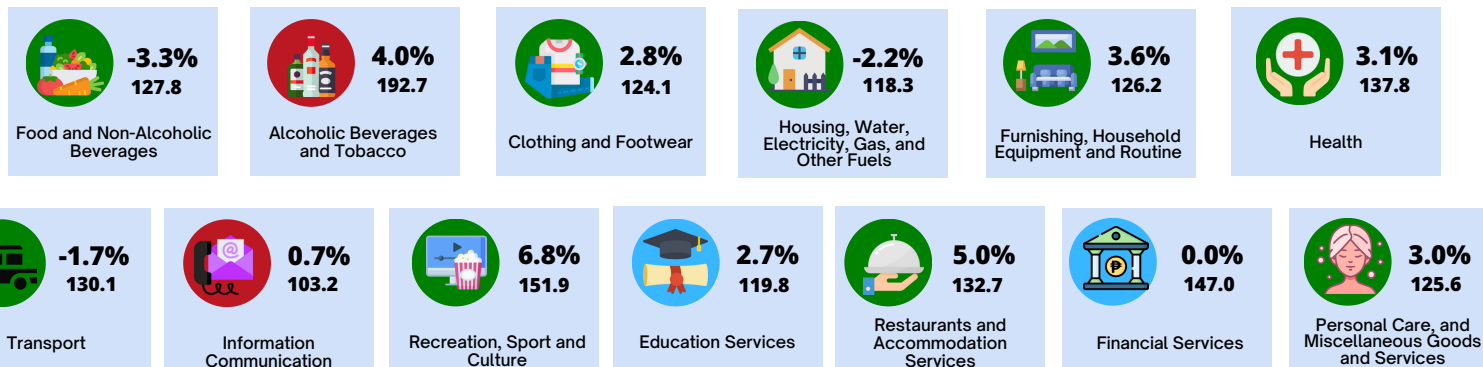
INFLATION RATE

is the annual rate of change or the year-on-year change in the **CONSUMER PRICE INDEX (CPI)** expressed in percent.

CPI

is an indicator of the change in the average retail prices of a fixed basket of goods and services commonly purchased by households relative to a base year.

INFLATION RATE (%) AND CPI BY COMMODITY GROUP, DAVAO REGION



INCREASE



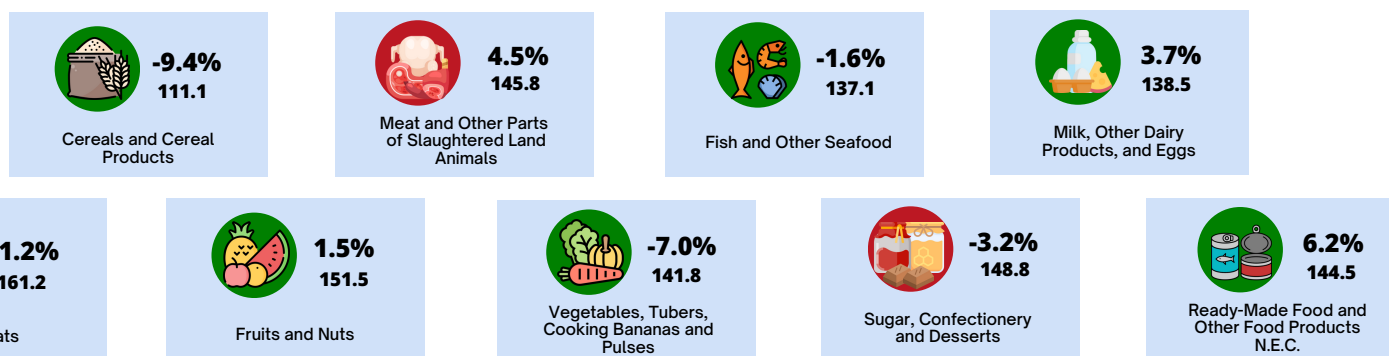
DECREASE



NO CHANGE

AS COMPARED TO JANUARY 2025 INFLATION

INFLATION RATE (%) AND CPI BY SELECTED FOOD GROUP, DAVAO REGION



SOURCE: SURVEY OF RETAIL PRICES OF COMMODITIES FOR CONSUMER PRICE INDEX, PHILIPPINE STATISTICS AUTHORITY
ICONS: FLATICON.COM

APPROVED FOR RELEASE:

RANDOLPH ANTHONY B. GALES
(Chief Statistical Specialist)
Officer-In-Charge
Regional Statistical Services Office 11

MNEC/PSA

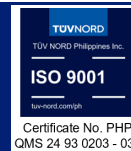


REPUBLIC OF THE PHILIPPINES
PHILIPPINE STATISTICS AUTHORITY
REGIONAL STATISTICAL SERVICES OFFICE - DAVAO REGION

Ango Building, Cabaguio Avenue, Davao City



(082) 224-1140
/PSAgovphx
<http://rsso11.psa.gov.ph>
rsso11@psa.gov.ph
rsso11sodc@psa.gov.ph





DAVAO REGION INFLATION RATE FOR THE BOTTOM 30% INCOME HOUSEHOLDS FEBRUARY 2025 (2018=100)



DATE PUBLISHED: 07 MARCH 2025

REFERENCE NO.: INF-25RSSO11-022

INFLATION FOR THE BOTTOM 30% INCOME HOUSEHOLD

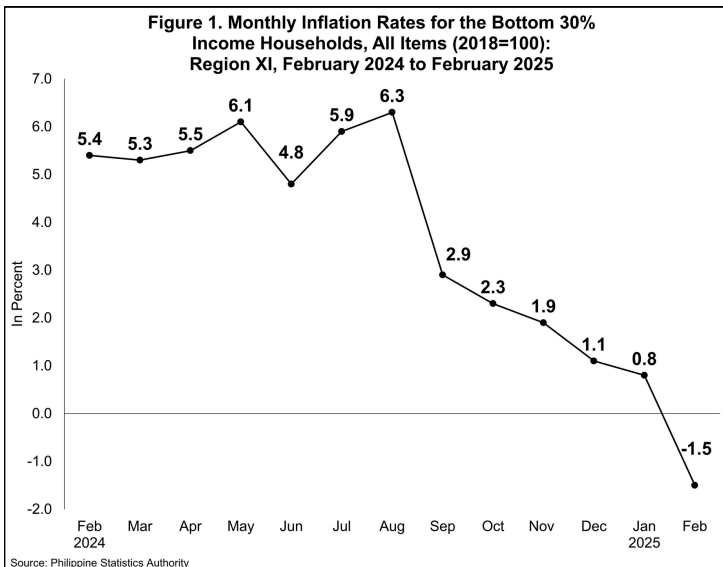
-1.5%

Ang inflation para sa bottom 30% income household ng rehiyon ay bumaba ng -1.5 porsiyento noong Pebrero 2025, mula 0.8 porsiyento noong Enero 2025.



128.2 CPI

Noong Pebrero 2025, ang CPI para sa bottom 30% income household ng rehiyon ay naitala sa 128.2.



Paano tinitipon ng PSA ang CPI para sa mga sambahayan na may pinakamababang 30% na kita?

Ang CPI para sa pinakamababang 30% na kita na mga sambahayan ay pinagsama-sama ng PSA upang sukatin ang mga pagbabago sa mga presyo ng mga bilihin na karaniwang binibili ng mga pamilyang kabilang sa ilalim ng 30% na decile ng kita.

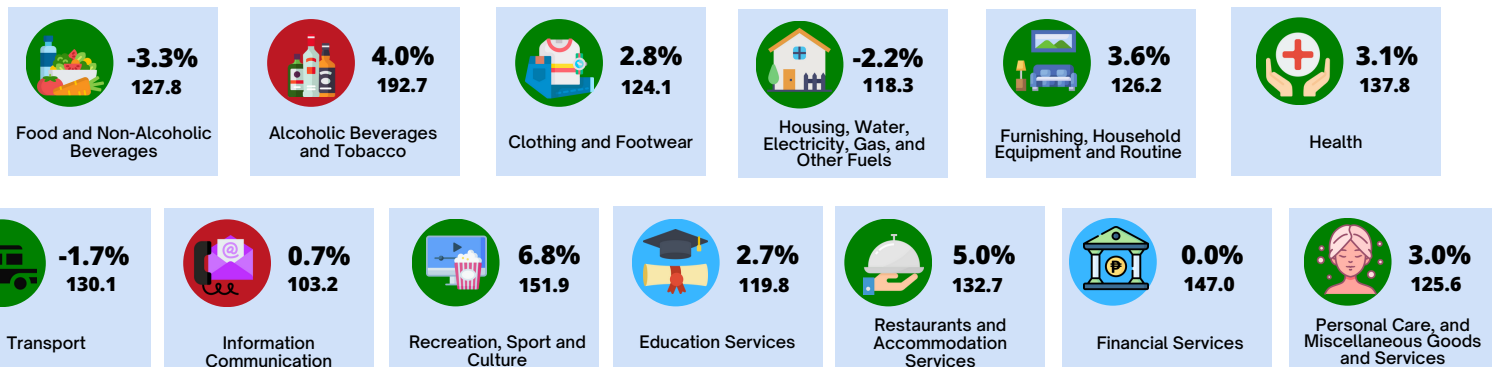
INFLATION RATE

ay ang taunang rate ng pagbabago o ang taunang pagbabago sa **CONSUMER PRICE INDEX (CPI)**.

CPI

ay tanda ng pagbabago ng kabuuang presyo ng isang basket ng mga produkto at serbisyo na karaniwang binibili ng isang sambahayan (household) sa isang taon kumpara sa presyo nito sa itinakdang taon (base year).

INFLATION RATE (%) AND CPI BY COMMODITY GROUP, DAVAO REGION



INCREASE



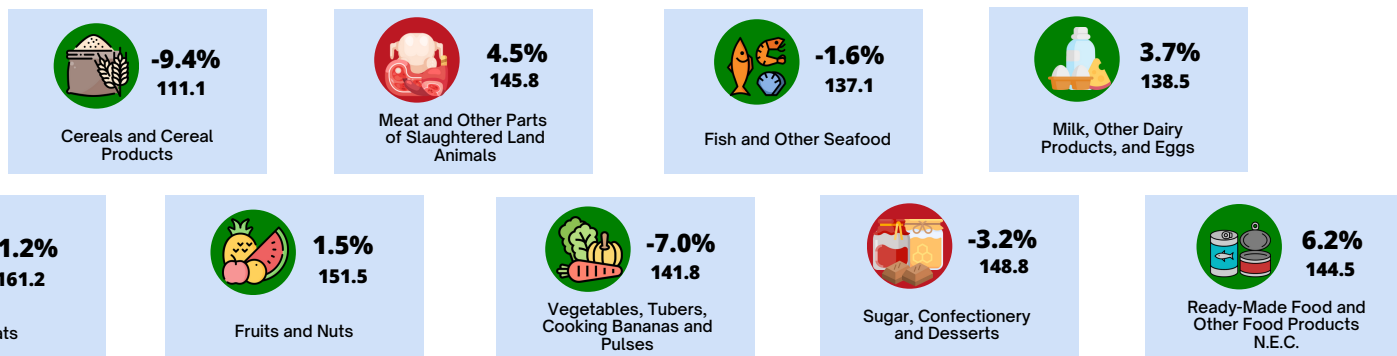
DECREASE



NO CHANGE

*KUMPARA SA INFLATION NOONG ENERO 2025 INFLATION

INFLATION RATE (%) AND CPI BY SELECTED FOOD GROUP, DAVAO REGION



SOURCE: SURVEY OF RETAIL PRICES OF COMMODITIES FOR CONSUMER PRICE INDEX, PHILIPPINE STATISTICS AUTHORITY
ICONS: FLATICON.COM

APPROVED FOR RELEASE:

RANDOLPH ANTHONY B. GALES
(Chief Statistical Specialist)
Officer-In-Charge
Regional Statistical Services Office 11



REPUBLIC OF THE PHILIPPINES
PHILIPPINE STATISTICS AUTHORITY
REGIONAL STATISTICAL SERVICES OFFICE - DAVAO REGION

Ango Building, Cabaguio Avenue, Davao City



(082) 224-1140
/PSAgovphxi
<http://rsso11.psa.gov.ph>
rsso11@psa.gov.ph
rsso11sodc@psa.gov.ph

