



DAVAO REGION INFLATION RATE FOR THE BOTTOM 30% INCOME HOUSEHOLDS DECEMBER 2024 (2018=100)



DATE PUBLISHED: 07 JANUARY 2025

REFERENCE NO.: INF-25RSSO11-005

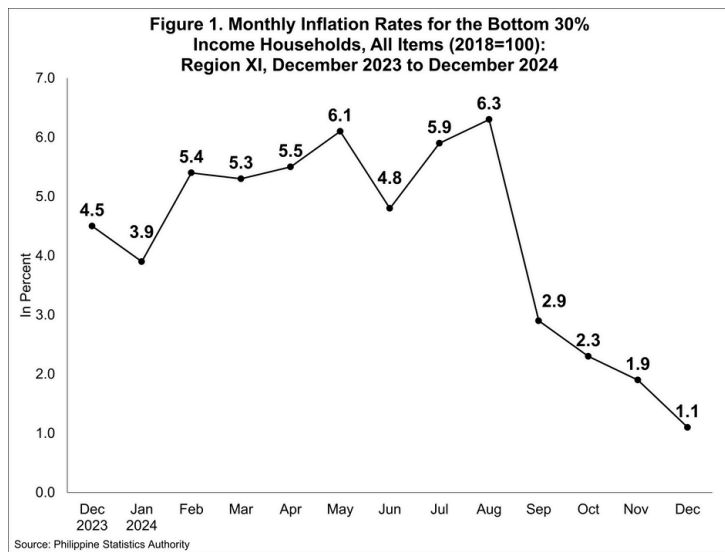
INFLATION FOR THE BOTTOM 30% INCOME HOUSEHOLD

1.1% ↓

The regional inflation for the bottom 30% income household declined to 1.1 percent in December 2024, from 1.9 percent in November 2024.

128.0 CPI

In December 2024, the CPI for the bottom 30% income household posted at 128.0.



How does the PSA compile the CPI for the bottom 30% income households?

The CPI for the bottom 30% income households is compiled by the PSA to measure the changes of prices of commodities commonly purchased by the families that belong to the bottom 30% income decile.

INFLATION RATE

is the annual rate of change or the year-on-year change in the **CONSUMER PRICE INDEX (CPI)** expressed in percent.

CPI

is an indicator of the change in the average retail prices of a fixed basket of goods and services commonly purchased by households relative to a base year.

INFLATION RATE (%) AND CPI BY COMMODITY GROUP, DAVAO REGION

0.4% 127.3	3.3% 189.6	3.2% 123.6	0.7% 121.4	3.6% 125.8	2.9% 136.2
-0.4% 128.7	-0.2% 102.7	6.9% 149.8	2.7% 119.8	5.8% 131.8	-0.1% 147.0
					2.9% 124.6

● INCREASE ● DECREASE ● NO CHANGE

AS COMPARED TO NOVEMBER 2024 INFLATION

INFLATION RATE (%) AND CPI BY SELECTED FOOD GROUP, DAVAO REGION

-3.8% 114.2	2.0% 141.8	4.4% 131.6	4.5% 138.4
23.0% 153.7	2.5% 149.4	2.3% 138.3	-7.0% 146.8
			6.5% 142.7

SOURCE: SURVEY OF RETAIL PRICES OF COMMODITIES FOR CONSUMER PRICE INDEX, PHILIPPINE STATISTICS AUTHORITY
ICONS: FLATICON.COM

APPROVED FOR RELEASE:

Randolph B. Gales
RANDOLPH ANTHONY B. GALES
(Chief Statistical Specialist)
Officer-in-Charge
Regional Statistical Services Office 11
MLC/MKA



DAVAO REGION INFLATION RATE FOR THE BOTTOM 30% INCOME HOUSEHOLDS DECEMBER 2024 (2018=100)



DATE PUBLISHED: 07 JANUARY 2025

REFERENCE NO.: INF-25RSSO11-006

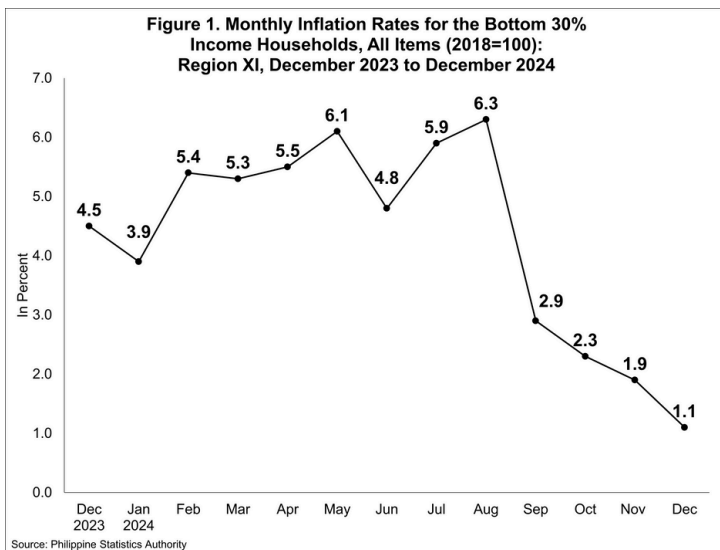
INFLATION FOR THE BOTTOM 30% INCOME HOUSEHOLD

1.1%

Ang inflation para sa bottom 30% income household ng rehiyon ay bumaba ng 1.1 porsiyento noong Disyembre 2024, mula 1.9 porsiyento noong Nobyembre 2024.

128.0 CPI

Noong Decembre 2024, ang CPI para sa bottom 30% income household ng rehiyon ay naitala sa 128.0.



DID YOU KNOW?

Paano tinitipon ng PSA ang CPI para sa mga sambahayan na may pinakamababang 30% na kita?

Ang CPI para sa pinakamababang 30% na kita na mga sambahayan ay pinagsama-sama ng PSA upang sukatin ang mga pagbabago sa mga presyo ng mga bilingin na karaniwang binibili ng mga pamilyang kabilang sa ilalim ng 30% na decile ng kita.

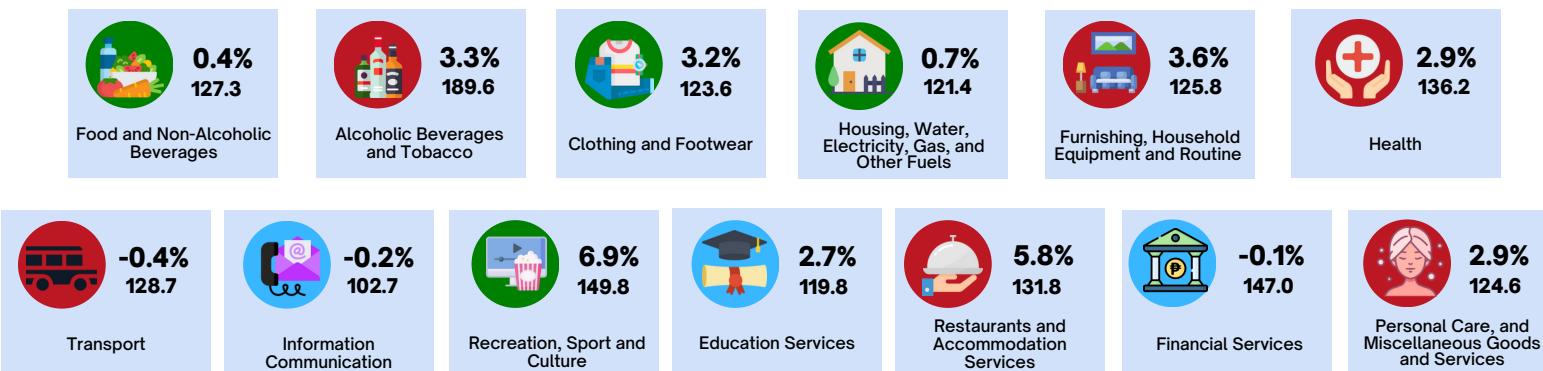
INFLATION RATE

ay ang taunang rate ng pagbabago o ang taunang pagbabago sa **CONSUMER PRICE INDEX (CPI)**.

CPI

ay tanda ng pagbabago ng kabuuang presyo ng isang basket ng mga produkto at serbisyo na karaniwang binibili ng isang sambahayan (household) sa isang taon kumpara sa presyo nito sa itinakdang taon (base year).

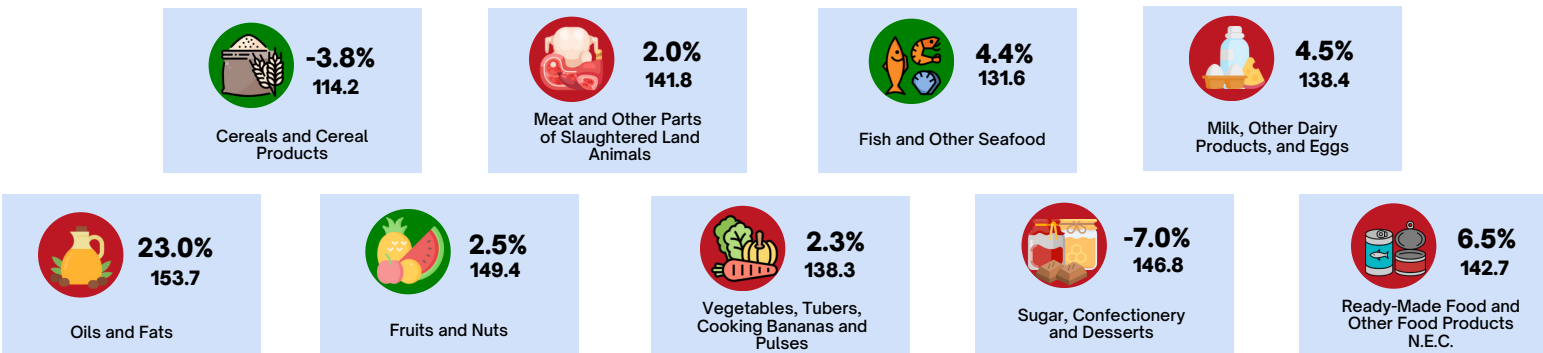
INFLATION RATE (%) AND CPI BY COMMODITY GROUP, DAVAO REGION



● TUMAAS ● BUMABA ● WALANG PAGBABAGO

*KUMPARA SA INFLATION NOONG NOBYEMBRE 2024 INFLATION

INFLATION RATE (%) AND CPI BY SELECTED FOOD GROUP, DAVAO REGION



SOURCE: SURVEY OF RETAIL PRICES OF COMMODITIES FOR CONSUMER PRICE INDEX, PHILIPPINE STATISTICS AUTHORITY
ICONS: FLATICON.COM

APPROVED FOR RELEASE:

RANDOLPH ANTHONY B. GALES
(Chief Statistical Specialist)
Officer-in-Charge
Regional Statistical Services Office 11

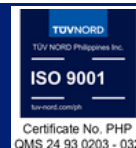


REPUBLIC OF THE PHILIPPINES
PHILIPPINE STATISTICS AUTHORITY
REGIONAL STATISTICAL SERVICES OFFICE - DAVAO REGION

Ango Building, Cabaguio Avenue, Davao City



(082) 224-1140
/PSA1govph
<http://rsso11.psa.gov.ph>
rsso11@psa.gov.ph
rsso11socd@psa.gov.ph



Certificate No. PHP
QMS 24 93 0203 - 032