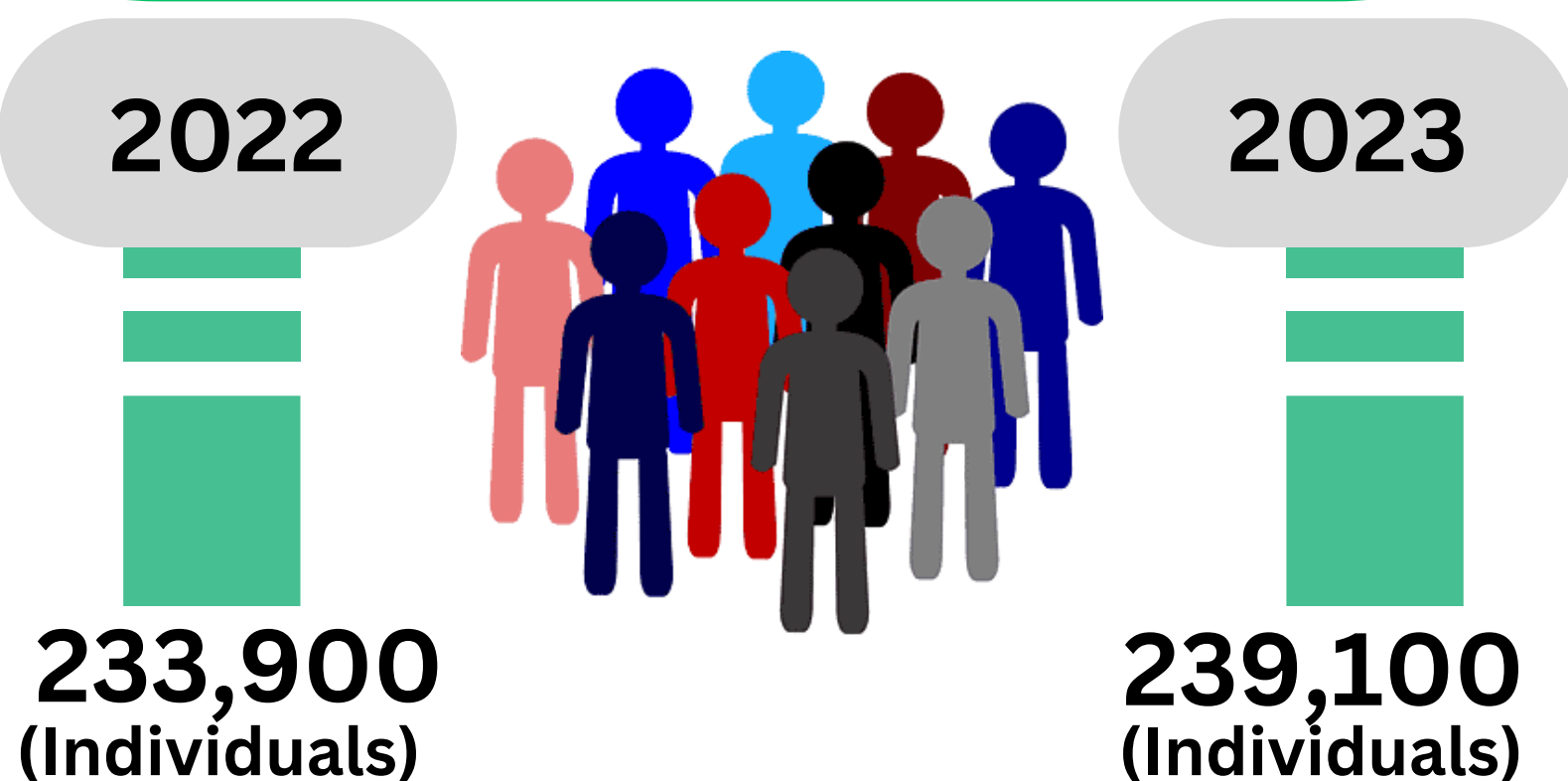


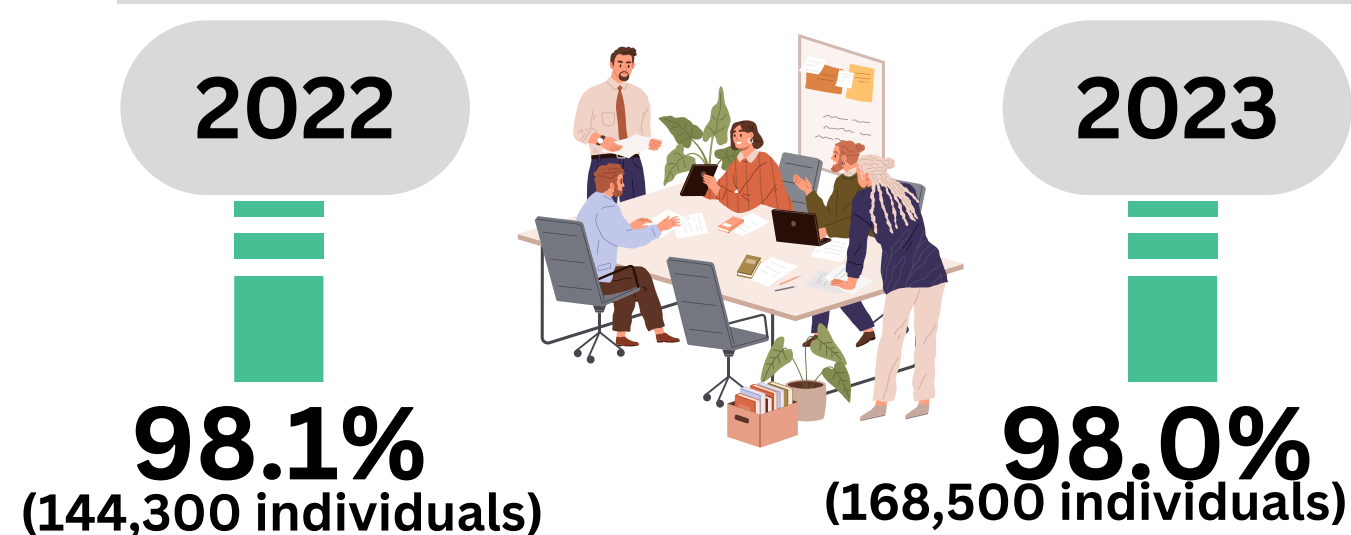
2023 LABOR FORCE SURVEY IN DAVAO OCCIDENTAL

POPULATION 15 YEARS OLD AND OVER



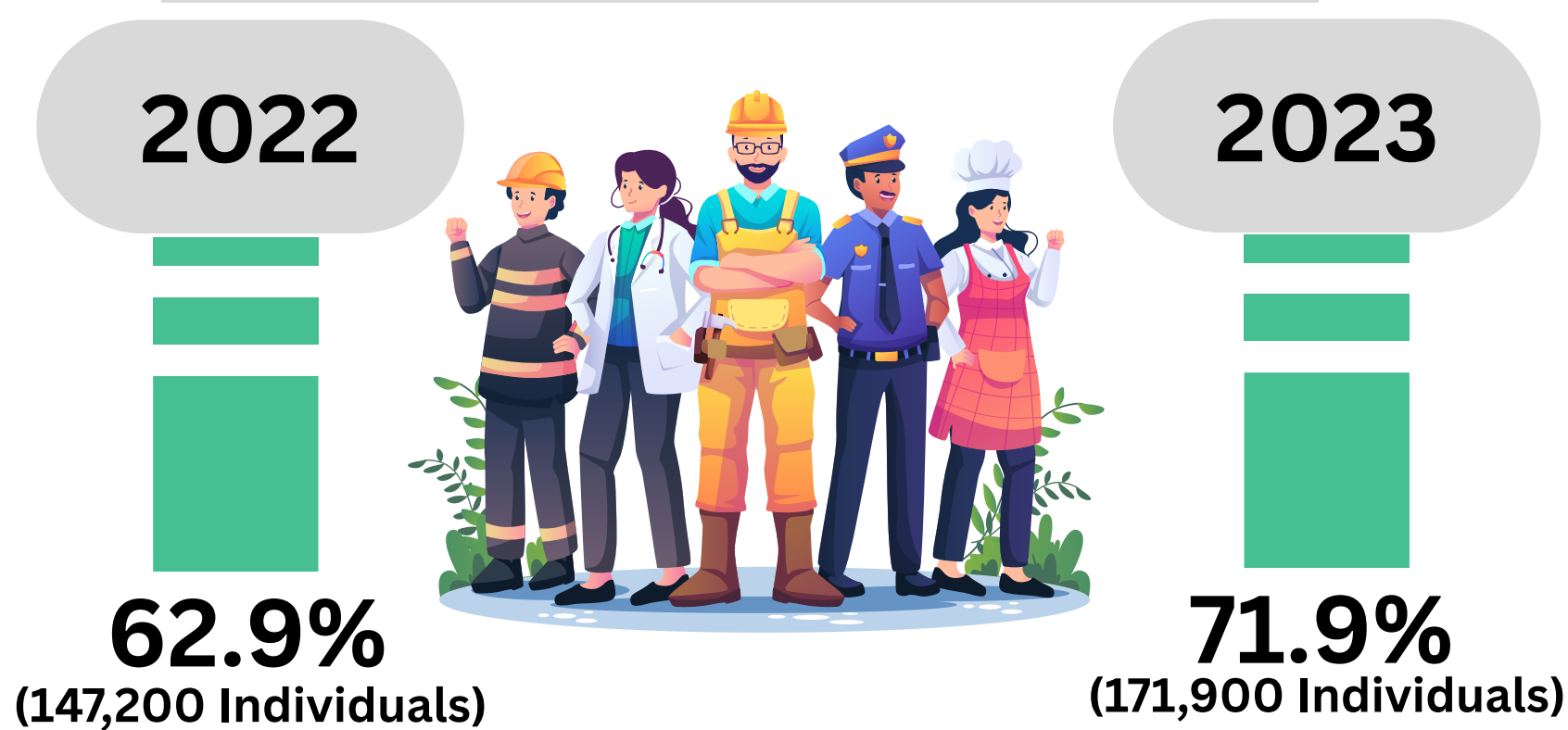
EMPLOYMENT RATE

Percentage of the total number of employed persons to the total number of persons in the labor force



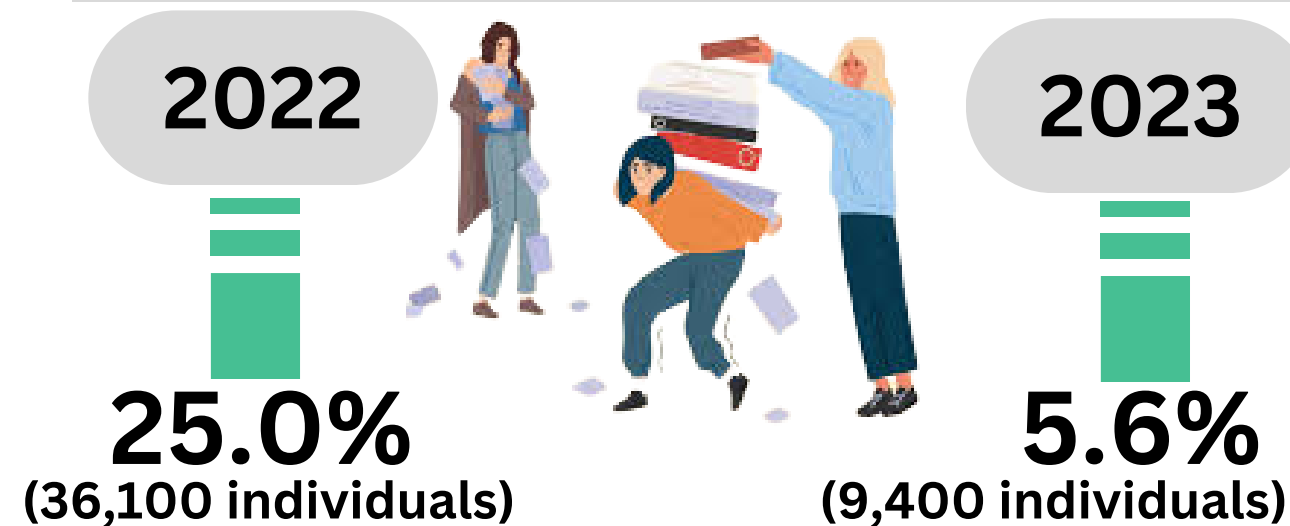
LABOR FORCE PARTICIPATION RATE

total number of persons in the labor force



UNDEREMPLOYMENT RATE

Percentage of the total number of underemployed persons to the total number of employed persons in the labor force



UNEMPLOYMENT RATE

Percentage of the total number of unemployed persons to the total number of persons in the labor force



APPROVED FOR RELEASE:

JESSIE A. MADULIN
Chief Statistical Specialist

Release date: 28 May 2025

Reference no: INF-1186-2025-020

Technical notes:

- Labor Force Survey is a nationwide survey conducted by the Philippine Statistics Authority (PSA) to gather data on the demographic and socio-economic characteristics of the population.
- Details may not add up to totals due to rounding.
- The methodology for the computation of annual estimates of labor and employment indicators is based on the Philippine Statistics Authority (PSA) Board Resolution No. 14 Series of 2021 - Adopting the General Method for Annualized Estimates for the Labor Force Survey 2021 and Beyond.
- Caution on the use of the statistics with Coefficient of Variation greater than 10% as these may not be reliable due to small observations.
- Annual 2023 estimates were based on the final estimates of January, February, March, April, May, and June 2023 LFS and preliminary estimates of July, August, September, October, November, and December 2023.