

REGISTERED LIVE BIRTHS IN MARAGUSAN: 2023

Data on births presented in this release were obtained from the timely and late registered births at the Office of the City/Municipal Civil Registrars all throughout the country and submitted to the Office of the Civil Registrar General through the Philippine Statistics Authority (PSA) - Provincial Statistical Offices (PSOs). The information presented includes births that occurred from January to December 2023 based on data files received by the PSA - Civil Registration Service (CRS) from the PSOs and processed as of 31 August 2024. Figures presented herein are not adjusted for under registration. This release includes births of Filipinos whose usual residence is abroad and births of foreign nationals that occurred in the country during the reference period. Births of Filipinos abroad which were reported to the Philippine Foreign Service Posts are presented in a separate report.

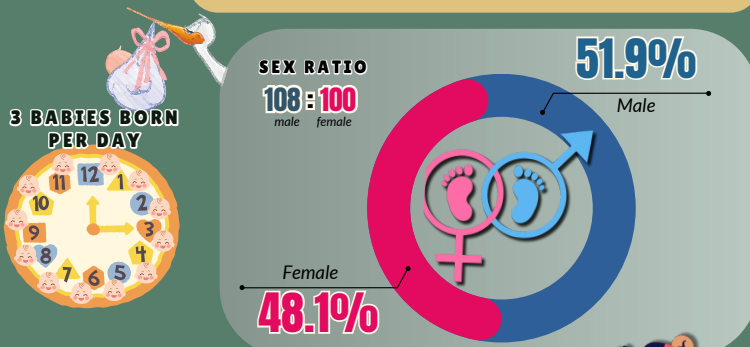


15 BIRTHS PER THOUSAND POPULATION

997

Live Births Registered in Maragusan
Live births increased 3.9% from 960 in 2020 to 997 in 2023, with a 5.5% increased from 945 in the previous year.

More males were born than females



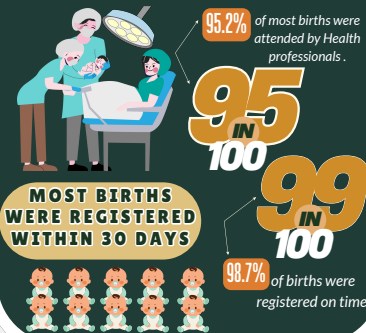
OVER HALF OF BABIES WERE BORN TO UNWED MOTHERS

62.5%

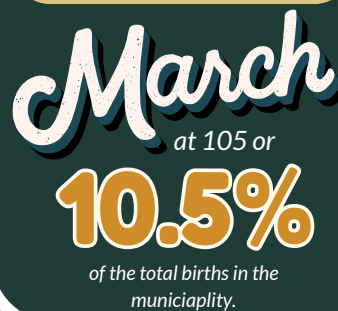
TOP 3 MUNICIPALITIES WITH HIGHEST PROPORTION OF NON - MARITAL BIRTHS

- Monkayo **67.7%**
- Compostela **65.5%**
- Pantukan/Montevista **65.1%**

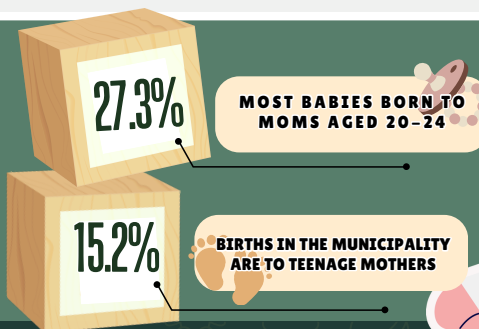
BIRTHS IN CARE: MEDICALLY ATTENDED



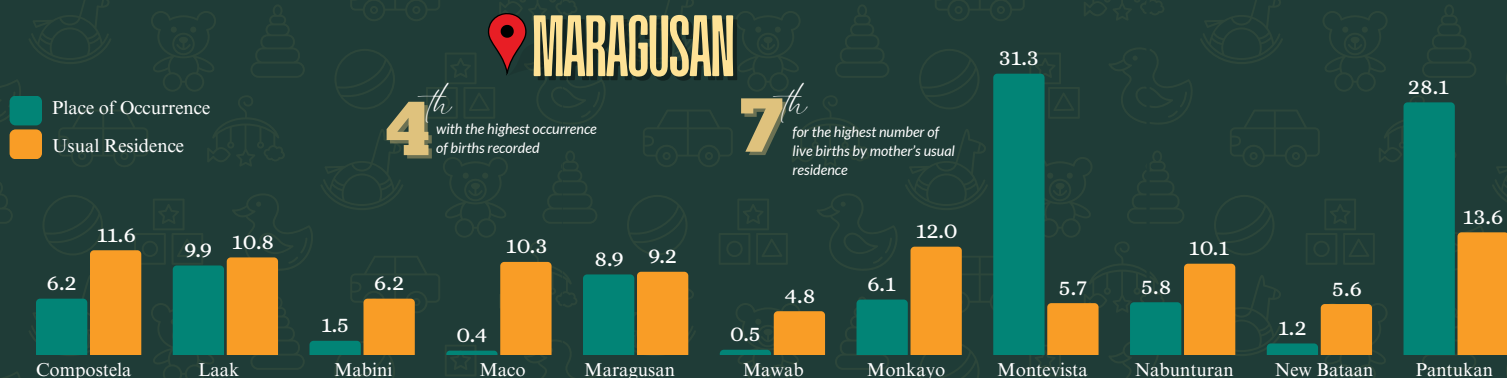
MOST NUMBER OF BIRTHS REGISTERED



95 for every 100 Births
were delivered in a health facility



Percent Share of Registered Live Births by Place of Occurrence and Mother's Usual Residence



Source: Philippine Statistics Authority (Data on live births are those registered at the Office of the City/Municipal Registrars throughout the country and submitted to the Office of the Civil Registrar General, Certificate of Live Birth-Municipal Form No. 102. Note: Figures are results of actual registration without any adjustment of under registration. Details may not add up to 100.0% due to rounding)