

DAVAO DEL NORTE INFLATION RATE DECEMBER 2023 (2018=100)

2.9
PERCENT

● Inflation rate is the annual rate of change or the year-on-year change in the Consumer Price Index (CPI) expressed in percent.

Davao del Norte's headline inflation moved at a slower pace as it settled at **2.9 percent** in December 2023.

119.8

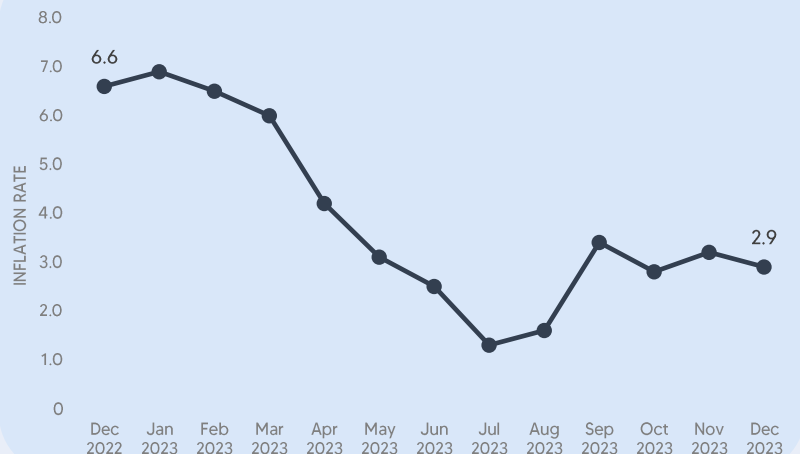
● CPI is an indicator of the change in the average retail prices of a fixed basket of goods and services commonly purchased by households relative to a base year.

In December 2023, the CPI for All Income Households in Davao del Norte was 119.8.

83
CENTAVOS

● Purchasing Power of Peso (PPP) is a measure of the real value of peso in a given period relative to a chosen reference period. One peso in 2018 is worth 83 centavos in December 2023.

Monthly Inflation Rate in Davao del Norte:
December 2022 - December 2023 (2018=100)



YEAR-ON-YEAR INFLATION RATE AND CPI BY COMMODITY GROUP



Food and Non-Alcoholic Beverages

7.1%
121.2



Alcoholic Beverages & Tobacco

12.3%
176.5



Clothing & Footwear

5.5%
114.0



Housing, Water, Electricity, Gas & Other Fuels

-8.8%
111.4



Furnishings, Household Equipment & Routine Household Maintenance

4.8%
118.1



Health

1.6%
130.1



Transport

3.8%
131.6



Information & Communication

0.5%
102.2



Recreation, Sports & Culture

4.3%
115.8



Education Services

4.6%
113.1



Restaurant & Accommodation Services

1.4%
105.8



Financial Services

0%
145.5



Personal Care, & Miscellaneous Goods & Services up

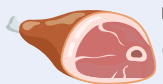
4.9%
118.6

YEAR-ON-YEAR INFLATION RATE AND CPI BY FOOD GROUP



Cereals and Cereal Products

16.4%
105.3



Meat and Other Parts of Slaughtered Land Animals

0%
135.0



Fish and Other Seafood

9.5%
127.4



Milk, Other Dairy Products and Eggs

1.9%
116.1



Oils and Fats

0.3%
129.8



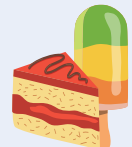
Fruits and Nuts

20.9%
142.1



Vegetables, Tubers, Plantains, Cooking Bananas and Pulses

-4.6%
152.6



Sugar, Confectionary and Desserts

-8.2%
137.8



Ready-made Food and Other Food Products n.e.c.

4.9%
128.3